

---

# INDEPENDENT STUDY

---

ELMIRA SAALABI

# TABLE OF CONTENTS

---

## *PRE PRODUCTION*

CREW LIST + CONTACT	CONCEPT	TREATMENT + LOOK
MOTION GRAPHICS PLAN	LIGHTING PLAN	
STORYBOARDS	EQUIPMENT NEEDED	
EXECUTION TIMELINE	REFERENCES	
BOOKING + EQUIPMENT FORMS		

## *POST PRODUCTION*

| LOCATION | EQUIPMENT LIST | PROP LIST |  
| MEAL PLAN | SHOT LIST |

# CREW LIST & CONTACT

---

## *PRODUCER & SPECIAL EFFECTS*

ELMIRA SAALABI 408.489.1353

## *MODEL*

AMANDA AZARNOUR 408.816.5722

## *DIRECTOR OF PHOTOGRAPHY*

REGAN TRAC 510.295.8114

## *CAMERA*

GARETT SAUER 925.783.5045

## *EXECUTIVE PRODUCER*

SCOTT HESS shess@expression.edu

CHRIS POTTER cpotter@expression.edu

# CONCEPT

---



# LANVIN

## PARIS

LANVIN is a high fashion house founded by Jeanne Lanvin.

Since the early 1900's, LANVIN has been one of the most influential designers in the world. LANVIN, the oldest fashion house still in operation.

The concept for this piece is to showcase the high class that is LANVIN. LANVIN stands for fashion and the elite. This video will be proof of that.

# TREATMENT & LOOK

---

A model wearing a black gown in a room that is all white and very bright.

The model will appear as a silhouette until the camera moves in closer.

As the camera moves around her, the model will hold her hand out. A ball will drop into her palm. As the ball is dropping, it mutates into different forms before it reaches its “ball” shape. Once the ball reaches its state, the LANVIN logo will emerge from within the ball.

The look is modern and high class. Very well lit, all white background and floor.

Music to be decided at a later time.

# MOTION GRAPHICS PLAN

---

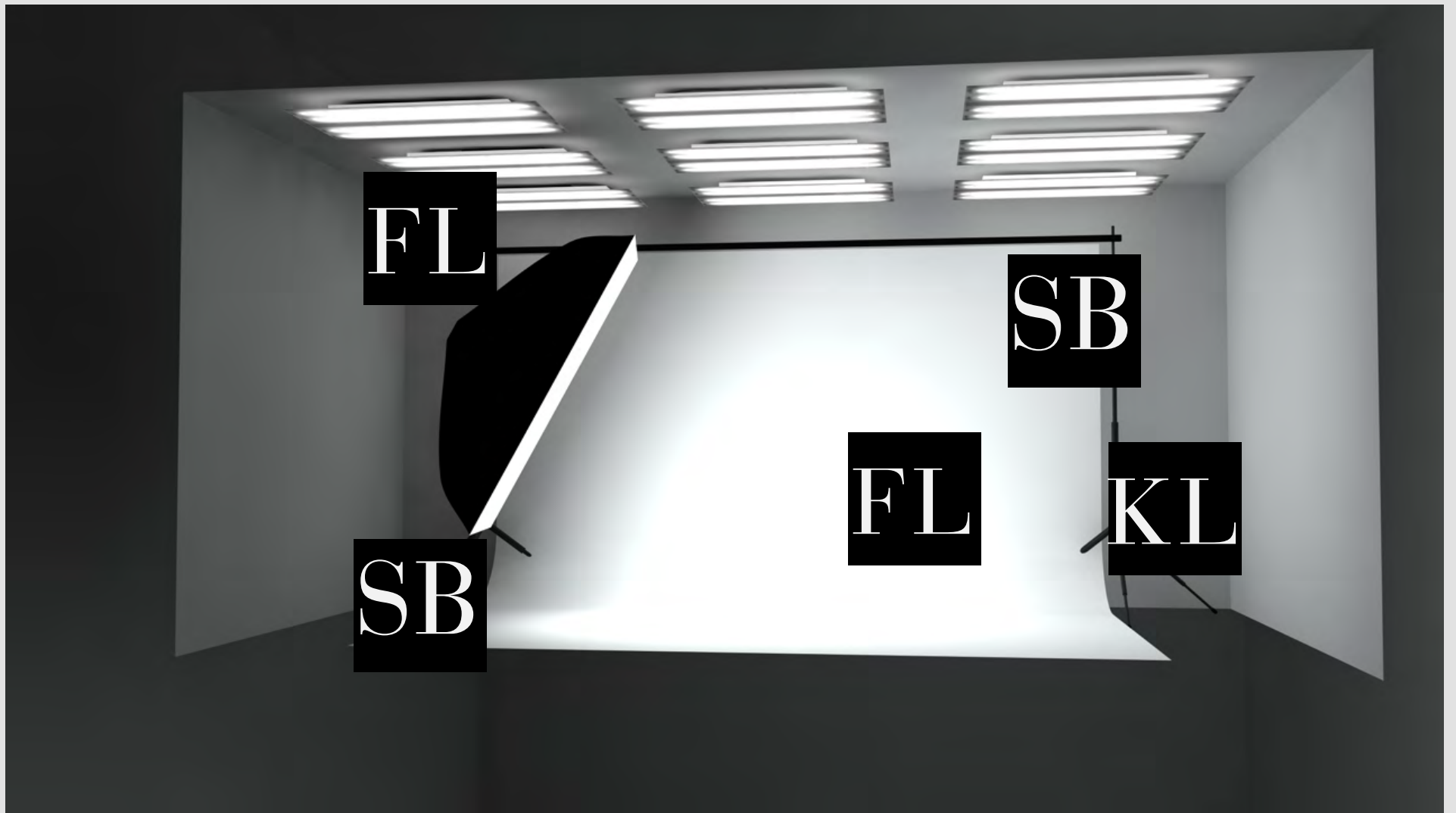
The plan is to shoot all the live action scenes before making the graphics.  
The graphics will be made using Cinema 4D + V-Ray Render programs.

Learn V-Ray between November 14th - December 15th.

# LIGHTING PLAN

---

Lighting is crucial here. The location needs to be very well lit.  
As many lights as possible.



3 soft boxes  
2 fill lights  
1 key light  
overhead lights

# STORYBOARDS

---



Establishing shot of the studio.  
Model is a silhouette.  
Slider shot from left to right pan.



# STORYBOARDS

---



# STORYBOARDS

---



# STORYBOARDS

---



Zoom into a close up of model. Model opens her eyes and closes them.



Cut to model mid shot/medium close up. Hand is now out.

# STORYBOARDS

---



Model looks at her hand.



Extreme close up of hand/palm.

# STORYBOARDS

---



Ball drops and forms different shapes.



Extreme Close up of ball. (Leather texture will be here)

# STORYBOARDS

---



Text begins to emerge.



Leather extruded LANVIN.

# STORYBOARDS

---



Logo lockup for 1-2 seconds.



Zoom out to wide shot. Model is holding the ball with the logo.

# STORYBOARDS

---



Fade to black.



Final logo lock up.



# STORYBOARDS

---

**ELMIRA SAALABI**

**AMANDA AZARNOUR**

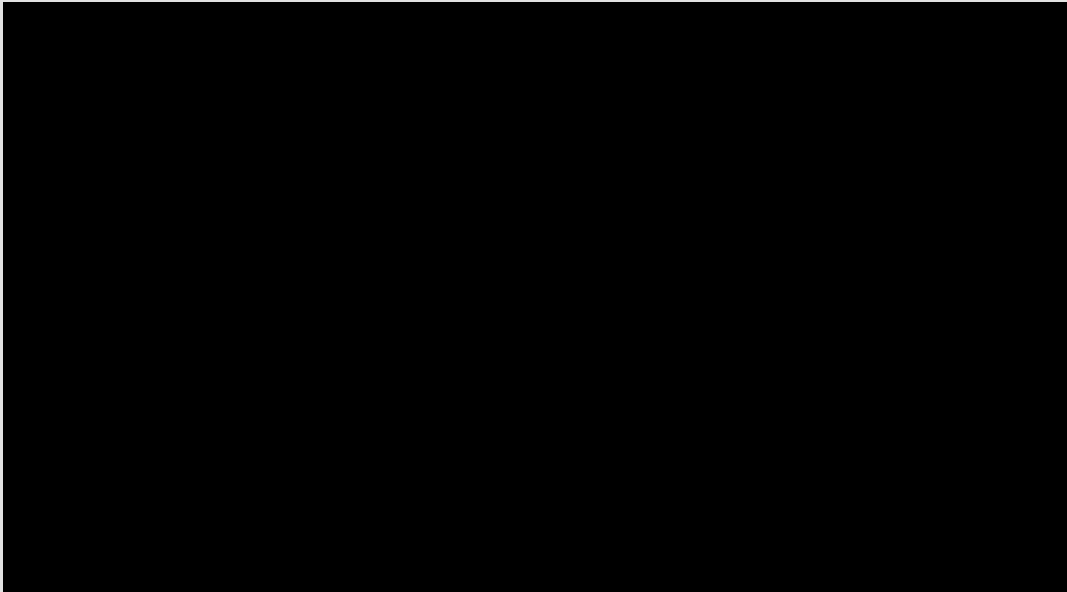
**REGAN TRAC**

**CARETT SAUER**

**SCOTT HESS**

**CHRIS POTTER**

Credits//thanks.



Black. Fin.

# EQUIPMENT NEEDED

---

CANON C300  
MANFROTTO TRIPOD  
1 LIGHT KIT  
2 KINO FLO  
BLACK FLAGS  
2 SILKS  
17" MONITOR  
SANDBAGS

MEYER HALL

# EXECUTION TIMELINE

---

*NOVEMBER 26<sup>TH</sup>*

TEST SHOOT

*NOVEMBER 21<sup>ST</sup> -  
DECEMBER 15<sup>TH</sup>*

LEARN VRAY

*DECEMBER 7<sup>TH</sup>*

ACTUAL SHOOT

*DECEMBER 16<sup>TH</sup>*

ROUGH CUT

*JANUARY 10<sup>TH</sup>*

FINE CUT

*JANUARY 16<sup>TH</sup>*

FINAL CUT

# REFERENCES

---

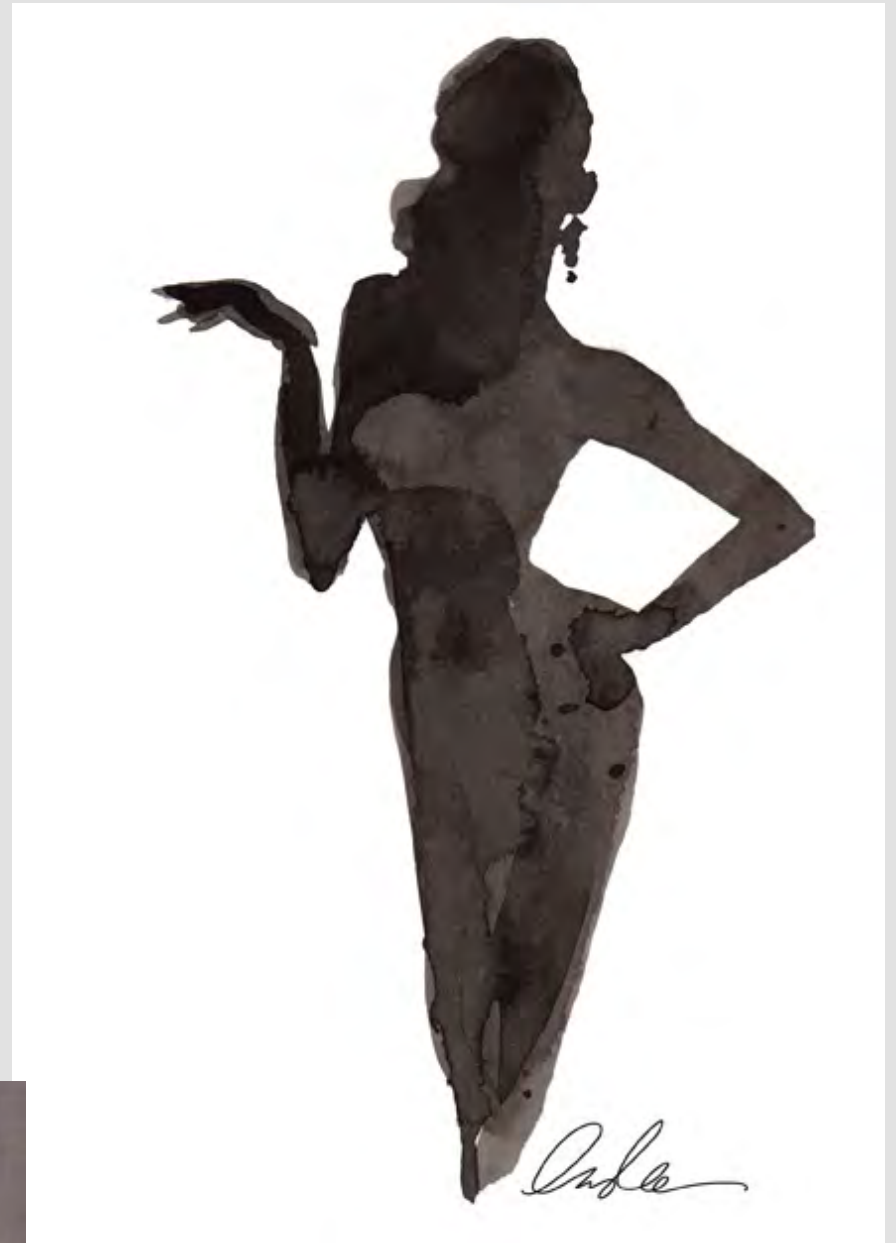


*MOTION DESIGN:*

*<http://vimeo.com/9856705>*

*<http://vimeo.com/13216490>*

*<http://vimeo.com/39564857>*



**PRODUCTION**

# LOCATION

---

*MEYER HALL*  
*EX'PRESSION COLLEGE*  
*6601 SHELLMOUND ST, EMERYVILLE, CA*

# EQUIPMENT LIST

---

- 1 CANON C300*
- 1 CANON C300 ACCESSORY*
- 1 CANON SUPPORT SYSTEM*
- 1 C300 MANFROTTO TRIPOD*
- 1 COMELY CRANE ARM*
- 1 STEEL BALL*
- 1 17" MONITOR*
- 1 MGD 60D CAMERA*
- 1 CANON EF 24-70mm LENS*
- 1 CANON EF 70-300mm LENS*
- 1 CANON EF 28mm LENS*
- 1 LIGHT KIT (2K)*
- 2 KINO FLO*
- 4 C-STANDS*
- 6 SAND BAGS*
- 3 BLACK FLAGS*
- 2 SILKS*

# PROP LIST

---

*THE SET WILL ACT AS A PROP IN ITS ENTIRETY.  
SANDBAGS, C-STANDS, LIGHTS, AND GOWN  
WILL ALSO ACT AS PROPS.*



# MEAL PLAN

---

*COFFEE, CASE OF WATER, AND LIGHT SNACKS  
WILL BE PROVIDED.*

# SHOT LIST

---

<b>TIMELINE CODES</b>	<b>SHOTS</b>	<b>DESCRIPTION</b>
<b>00:00:00:00</b>	<b>ES</b>	<b>SILHOUETTE \ SET</b>
<b>00:00:00:10</b>	<b>ES-DOLLY</b>	<b>SILHOUETTE \ SET CAMERA PAN</b>
<b>00:00:00:15</b>	<b>CU</b>	<b>ZOOM INTO CLOSE UP OF EYES</b>
<b>00:00:00:25</b>	<b>MS</b>	<b>AMANDA LOOKING DOWN</b>
<b>00:00:00:35</b>	<b>MS</b>	<b>AMANDA PUTS HER HAND OUT</b>
<b>00:00:00:40</b>	<b>MS</b>	<b>LOOKS DOWN AT HER HAND</b>
<b>00:00:00:50</b>	<b>ECU</b>	<b>CLOSE UP OF HAND</b>
<b>00:00:00:55</b>	<b>OTS</b>	<b>HAND BEING HELD OUT</b>
<b>00:00:01:05</b>	<b>MS</b>	<b>HAND HELD OUT \ LOOKING AHEAD</b>
<b>00:00:01:20</b>	<b>MS-ES</b>	<b>ZOOM OUT TO ESTABLISHING SHOT</b>